

Import LCID from gyokovsolutions

Is it possible to import/convert the cellid from gyokovsolutions to LCID (28 Bit)?

Advantage:

- No mix between CID (16 Bit) and LCID (28 Bit)

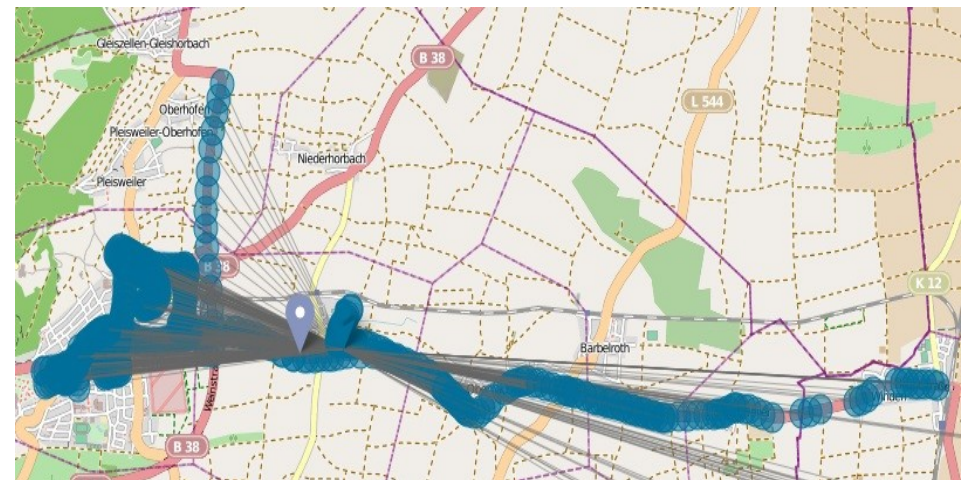
Following apps use the LCID (28 Bit):

- inViuOpenCellId
- Tower Collector
- Keypad-Mapper

Import LCID from gyokovsolutions

- CID 16 Bit
- MCC: 262 MNC: 7 LAC: 41727
RNC: 427 CID: 7938

- LCID 28 Bit
- MCC: 262 MNC: 7 LAC: 41727
LCID: 27991810



The same cell id from a base station but shows two cells with different measurements

Import LCID from gyokovsolutions

- Convert Node (RNC) and CellID UMTS/3G from a 16 Bit to a 24 Bit CellID

$$65536 * \text{Node} + \text{CellID} = \text{LCID}$$

$$65536 * 427 + 7938 = 27991810$$

$$7938 \xrightarrow{\text{convert to}} 27991810$$

- **LTE/4G i have no experience**